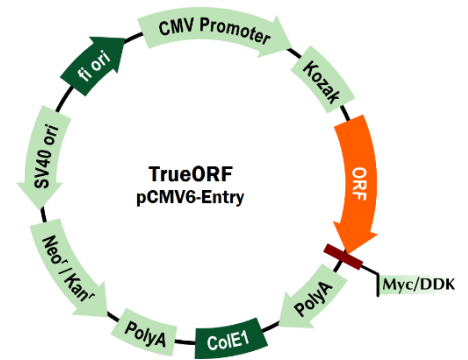


# cDNA Clone Set – Ideal for Functional Screening

## ➤ Why choose cDNA clones from OriGene?

- ✓ **Transfection-ready** plasmid DNA - CMV promoter
- ✓ **Two formats** - Tagged and untagged
- ✓ **Expression validated**
- ✓ **In stock**



## ➤ cDNA clone set

Clone sets of gene families or gene pathways can be used for high throughput functional screening, such as kinases, GPCR, transmembrane proteins or transcription factors. Valuable data can be generated quickly by screening thousands of genes.

- ✓ **High Throughput functional screening**
- ✓ **Arrayed in plates** – Ready-to-use
- ✓ **Pre-assembled sets or cherry picking**
- ✓ **Get results fast**
- ✓ **Proven /cited research** – Successful use in Nature, Cell, etc



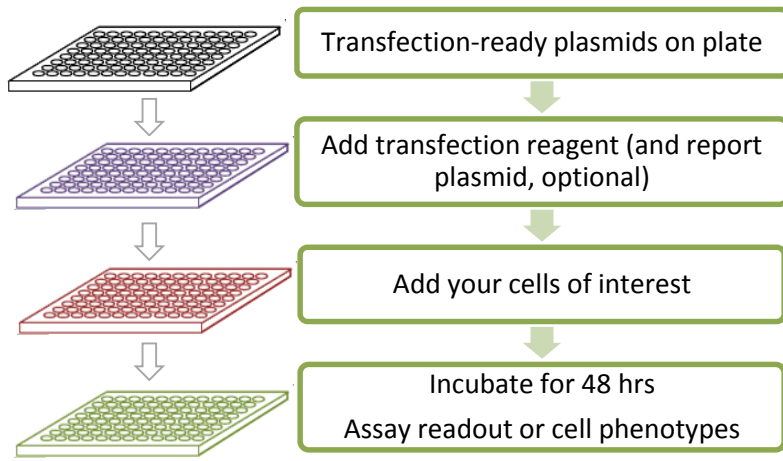
### Gene families / Pathways to select from

Transmembrane	Transcription Factors
Protein Kinases	GPCR
Proteases	Ubiquitin ligases/hydrolases
Secreted Proteins	Cytokines
... More	

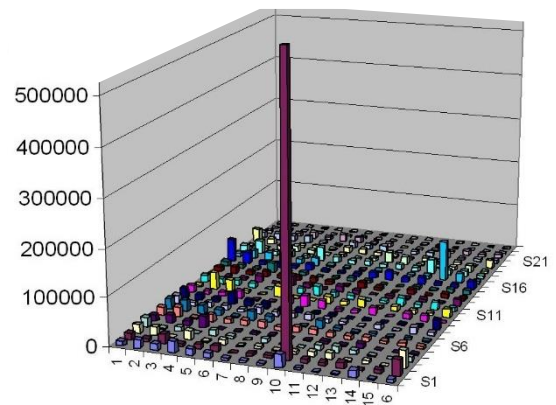
[www.origene.com/clone-set](http://www.origene.com/clone-set)

# cDNA Clone Set – Ideal for Functional Screening

## Functional Screening Flow Chart



## Typical Screening Data



The transcription factor set was used to screen factors that can activate IFN- $\beta$  gene, reporter plasmid, IFN- $\beta$  promoter driven luciferase.

## Publications that successfully used OriGene's clone sets in screenings

Authors	Article Title	Journal
Jin J. et al	The E3 ubiquitin ligase RNF135 regulates the tumorigenesis activity of tongue cancer SCC25 cells	Cancer Med. 2016 Nov;5(11):3140-3146
Mao X. et al	Pathological $\alpha$ -synuclein transmission initiated by binding lymphocyte-activation gene 3	Science. 2016 Sep 30;353(6307)
Makowski SL. et al	A Protease-independent Function for SPPL3 in NFAT Activation	Mol Cell Biol. 2015 Jan;35(2):451-67
Laurén J. et al	Cellular prion protein mediates impairment of synaptic plasticity by amyloid-beta oligomers	Nature. 2009 Feb 26;457(7233):1128-32
Li S. et al	Regulation of Virus-triggered Signaling by OTUB1- and OTUB2-mediated Deubiquitination of TRAF3 and TRAF6	J Biol. Chem. 2010 Feb 12;285(7):4291-7
Varjosalo M. et al	Application of active and kinase-deficient kinome collection for identification of kinases regulating hedgehog signaling	Cell. 2008 May 2;133(3):537-48
Wei P. et al	RNF34 Is a Cold-Regulated E3 Ubiquitin Ligase for PGC-1 $\alpha$ and Modulates Brown Fat Cell Metabolism	Mol Cell Biol. 2012 Jan;32(2):266-75.